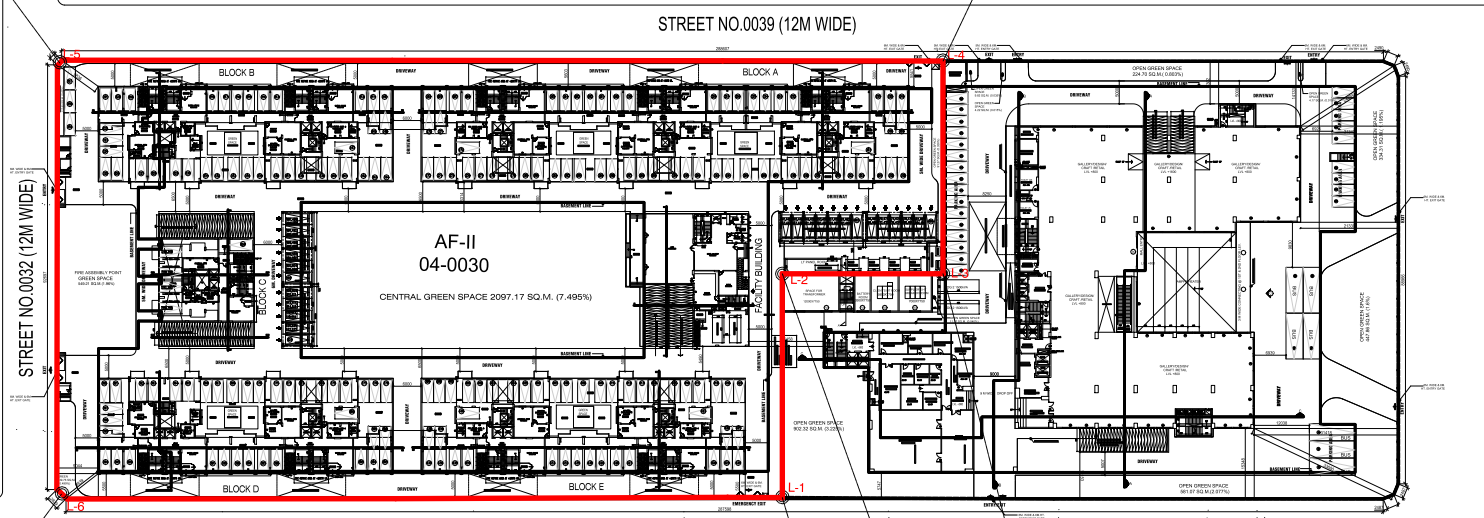


LAT:22°35'5.64"
LONG:88°26'41.83"

LAT:22°35'5.16"
LONG:88°26'48.58"



LAT:22°35'2.65"
LONG:88°26'41.56"

STREET NO.0037 (15M WIDE)

LAT:22°35'3.75"
LONG:88°26'47.22"

RESIDENTIAL BUILDINGS

BUSINESS ASSEMBLY BUILDING
LAT:22°35'3.65"
LONG:88°26'48.44"

GROUND FLOOR PLAN

LAT:22°35'2.17"
LONG:88°26'47.08"

L-6 North : 22°35'2.65"	East : 88°26'41.56"
L-5 North : 22°35'5.64"	East : 88°26'41.83"
L-4 North : 22°35'5.16"	East : 88°26'48.58"
L-3 North : 22°35'3.65"	East : 88°26'48.44"
L-2 North : 22°35'3.75"	East : 88°26'47.22"
L-1 North : 22°35'2.17"	East : 88°26'47.08"

**SITE PLAN OF PLOT AT BLOCK AF - II,
PREMISES NO - 04 - 0030, NEWTOWN,
KOLKATA, ACTION AREA - I**

SIGNATURE OF OWNER

SIGNATURE OF ARCHITECT

